



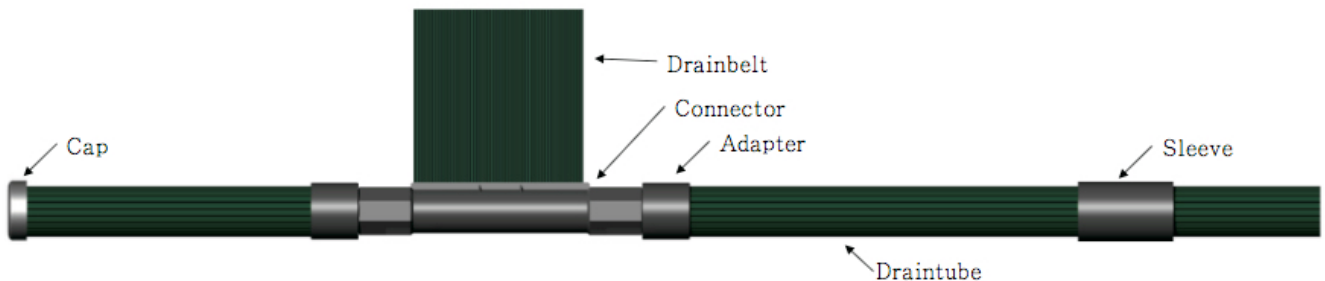
Equestrian Arena, Manège (Ménage*) Construction

Low Cost, Easy To Install Drainage

Drainnovation® offers an innovative solution to the drainage and construction of equestrian arenas, manèges (ménages), that dramatically reduces the cost and complexity of construction cost, making self-assembly possible without any specialist tools.

Drainbelt is a patented, capillary, siphonic, intensive, micro-drainage system that is easy to install and dramatically less expensive to construct than the conventional method of a gravel/stone carpet. This innovative system completely eliminates the need for the gravel/stone and geotextile layers, radically reducing cost and construction time and making the construction of an arena/manège affordable and practical for the DIY builder and reducing capital outlay for the commercial arena operator.

The system consists of a network of Drainbelts and Draitubes. The Drainbelt is laid directly on the graded sub-soil and discharges into Draitubes via connectors. The working surface is laid directly on top of the Drainbelt network. No gravel or geotextile is required, affording significant cost savings and simplifying and speeding up construction. However if you ever intend to remove and replace your working surface in the future, a single geotextile layer is recommended. Drainnovation® can supply the kit with a geotextile layer if desired.



Drainnovation® offers two kits for a standard 40m x 20m arena; a high performance kit and standard kit. Drainnovation® also offers a complimentary service for a pre-construction site survey. Following this we will produce bespoke plans to your particular site, so that the working drawings and assembly instructions are relevant to your project. However the standard layouts are appended to this document.

Drainage Rate

Whilst the drainage rate will be affected by your working surface, the kits are designed for 25mm/h and 12mm/h drainage rates respectively for the high and standard performance kits. The high performance kit is suitable for commercial applications, whilst the standard kit is more appropriate for private arena manèges.

Ultra-high drainage rate systems can also be designed according to the customer's requirements.

What is it?

Drainbelt and DRAINTUBE are complimentary drainage products supplied with a range of fittings and accessories for assembly. A full description of how the product works is on our website <https://www.drainnovation.net/how-does-it-work/>

The equipment requires no specialist tools to assemble and the components are easy to handle on site.

Drainnovation® also offers an assembly and commissioning service by an approved technician.



Drainbelt is 200mm wide and is supplied in 50m rolls weighing less than 20 kgs, making the product easy to unload and handle on site. It is simply rolled out on the graded sub-base. Drainbelt can be cut with a Stanley-knife/box cutter.

DRAINTUBE is supplied in 1m lengths, which are light and easy to handle.



Drainbelt is placed with the capillary grooves facing downwards; so the water flows up into the grooves by capillary action, assisted sometimes by gravity head. There is also a much higher surface area of open void space compared with a perforated drainage pipe making the flow of water into the belt laminar, rather than turbulent, so fine particles are not suspended and carried with the water into the belt. This makes Drainbelt a non-clogging drainage system with a very long life, that doesn't silt up. In fact it was searching for a solution to the silting up of conventional perforated drains in civil engineering that inspired the invention of Drainbelt.

Benefits of Drainbelt and DRAINTUBE

- No gravel/stone required, easy unloading and handling
- High drainage performance
- Non-clogging/silting, long life
- Suitable for self-assembly
- Lower cost than conventional stone/gravel carpet method

For more information or to request a complimentary site visit, survey, plans and quotation contact ;

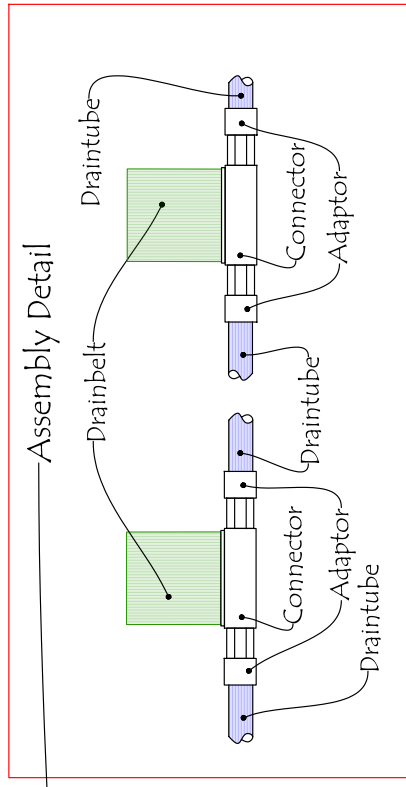
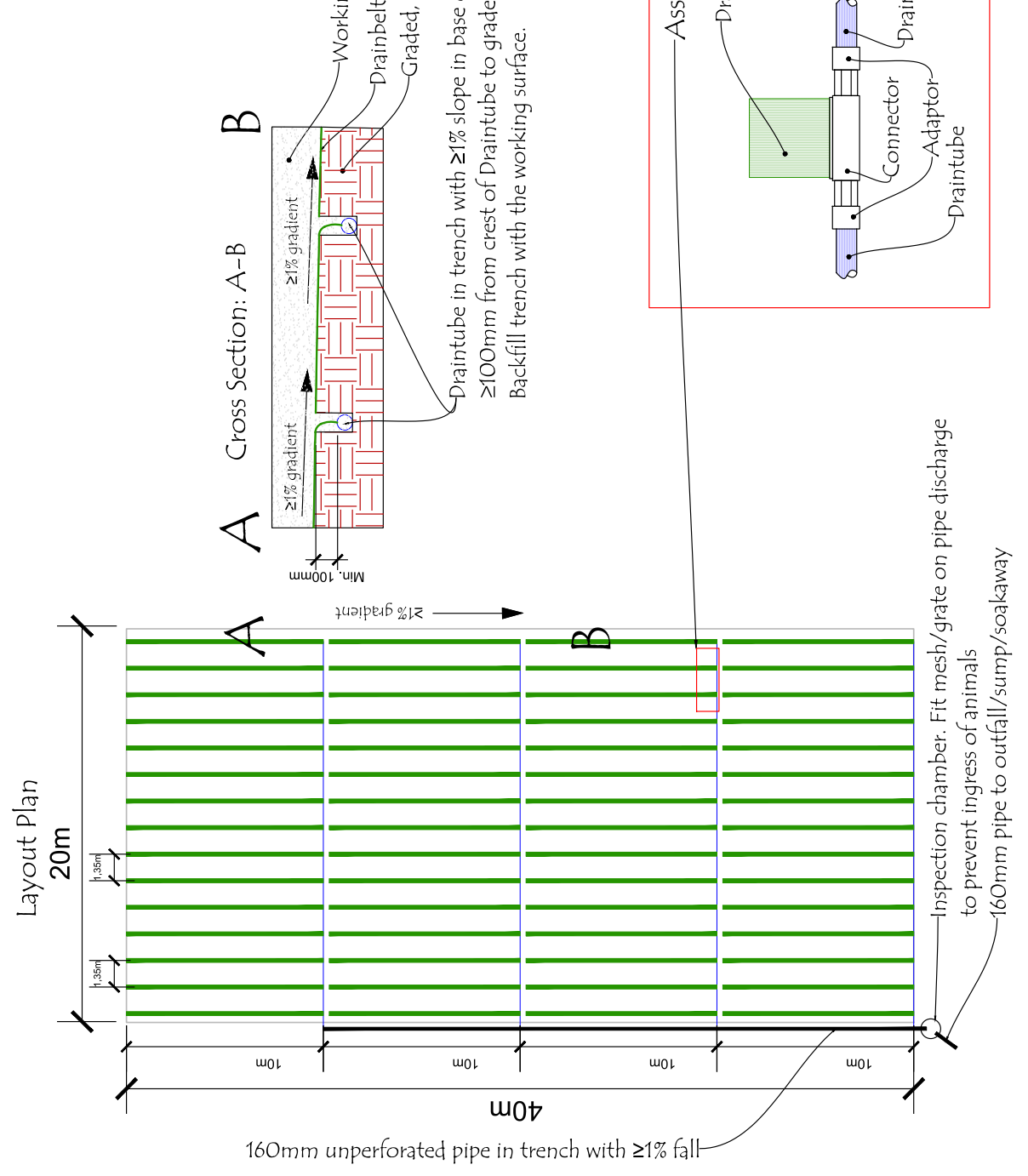
Giles Wardle. admin@drainnovation.net tel: 07771 546 358

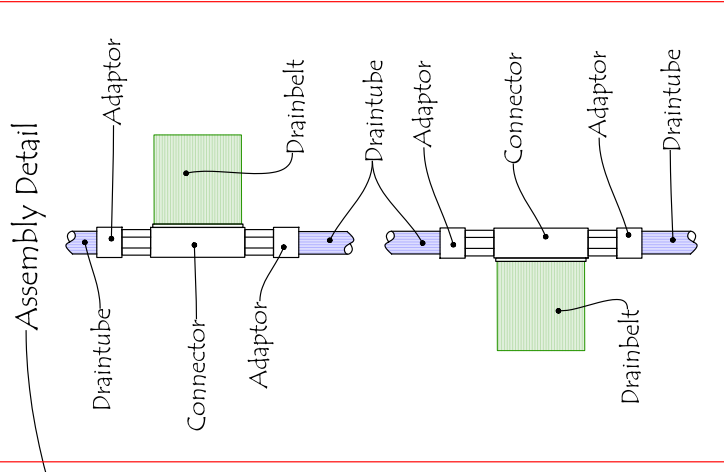
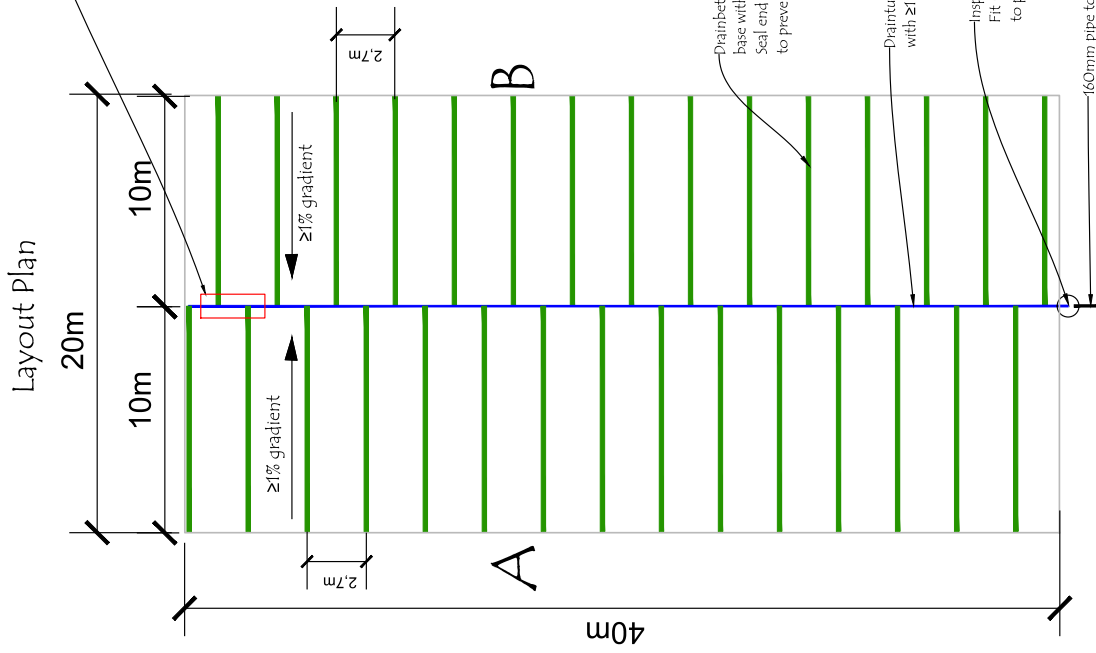
* *The correct term is manège, however ménage is commonly (although incorrectly) used.*



www.drainnovation.net

This is a typical layout only. Contact Drainnovation for detailed plan tailored to your site.





Drainbelt laid flat on sub-soil base with ≥1% gradient to spine trench. Seal end of Drainbelt with tape to prevent ingress of fine particles.

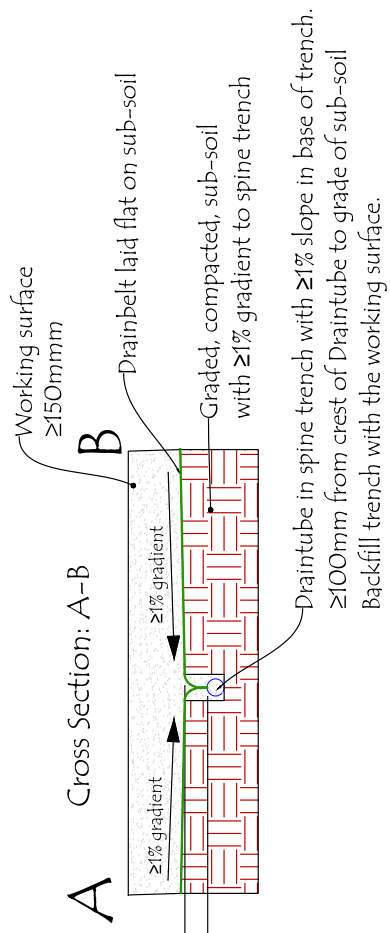
Drainbelt laid flat on sub-soil

Graded, compacted, sub-soil with ≥1% gradient to spine trench

Drainbelt in spine trench with ≥1% slope

Inspection chamber Fit mesh/grate on pipe discharge to prevent ingress of animals

60mm pipe to outfall/sump/soakaway



www.drainnovation.net

This is a typical layout only. Contact Drainnovation for detailed plan tailored to your site.